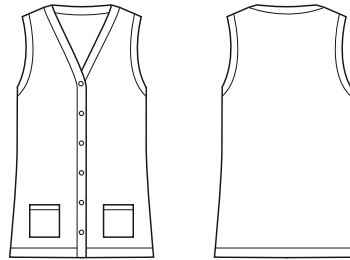




## WOMENS BUTTON FRONT SLEEVELESS VEST

CK961LV



### COLOURS



### GARMENT MEASUREMENTS

SIZE	XXS	XS	S	M	L	XL	2XL	3XL	4XL
½ CHEST* (CM)	41.5	44.5	47.5	50.5	53.5	56.5	60.5	63.5	66.5
LENGTH FROM HSP (CM)	66	67	68	69	70	71	72	73	74

½ CHEST MEASURED 2.5CM BELOW UNDERARM

### STYLE F&B

- Longer hem length, designed to sit just below bottom
- Clean hem, for a minimalist look and clean finish
- 2x small front pockets. (Note: Pockets are designed for tissues/pen/small tools only.)

### FABRIC COMPOSITION

- 60% Acrylic 40% Merino Wool
- 14GG
- Fully fashioned Biz Care knits provide warmth, durability and a soft hand feel
- 60% acrylic provides extra durability required for functional roles

### CARE DETAILS

- Machine wash warm on gentle cycle, with like colours inside out, using wool approved detergent. Do not wring, do not bleach. Reshape and dry flat in shade. Cool iron if required with press cloth. Do not dry clean.

### MATCH WITH

- Can be worn over all tops, blouses and shirts - as you would any other knit vest
- Also available in similar styling - button front cardigan CK045LC and S/S zip front cardigan CK962LC

